

# MP-1800M

### General Features

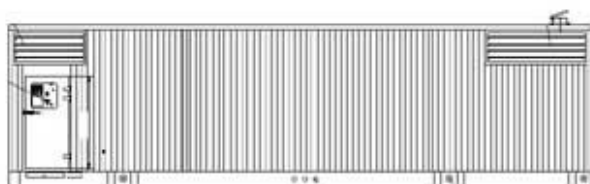
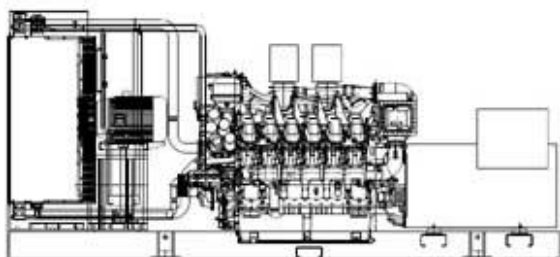
- Engine (MTU 12V4000G14F), Radiator 40°C max, belt driven fans, with safety guard
- 24V charge alternator
- Alternator (Stamford, Leroy Somer & Mecc Alte for option), single bearing alternator IP23, insulation class H/H
- Skid and vibration isolators
- Dry type air filter, fuel filter, oil filter
- Main line circuit breaker
- Standard control panel
- Four 12V batteries, rack and cable
- Ripple flex exhaust pipe, exhaust siphon, flange, industrial muffler

PHOTO FOR REFERENCE ONLY



### Technical Data

Output Frequency	50 Hz
Rated Speed	1500RPM
Prime Power	1640KVA/1312KW
Standby Power	1800KVA/1440KW
Rated Voltage	400/230V
Phase	3
Power Factor	0.8
Fuel Consumption 100% Load	189g/Kwh
Fuel Consumption 75% Load	195g/Kwh
Fuel Consumption 50% Load	203g/Kwh
Operation Altitude	≤1000m
Ambient Temperature	≤40°C



### Dimension and Weight

Genset Type	Open Frame	Soundproof Containerized
Length(L) (mm)	5625	ISO 40ft HQ
Width(W) (mm)	2150	ISO 40ft HQ
Height(H) (mm)	2650	ISO 40ft HQ
Gross Weight (kg)	13500	19500

**MP-1800M****Engine Specification**

Manufacturer / Model:	MTU 12V4000G14F
Air Intake System:	Turbo, Water/Air Cooling
Fuel System:	Electronic Fuel Injection System
Cylinder Arrangement:	12 in V
Displacement:	57.2L
Bore and Stroke:	170*210 (mm)
Compression Ratio:	16.5:1
Rated RPM:	1500rpm
Nominal Power at Rated RPM:	1420KW
Governor Type:	ADEC
Exhaust Gas Flow:	264m <sup>3</sup> /min
Exhaust Temperature:	455°C
Max Back Pressure:	8.5kPa
Max Intake Restriction:	5kPa
Burning Capacity:	108m <sup>3</sup> /min
Total Oil Capacity:	260L
Oil Consumption:	0.3% Fuel Consumption
Engine Coolant Capacity:	200L
Max Water Temperature:	104°C

**Alternator Specification**

Manufacturer / Model:	STAMFORD S7L1D-D4
Number of Phase:	3
Connecting Type:	3 Phase and 4 Wires, "Y" type connecting
Number of Bearing:	1
Protection Grade:	IP23
Exciter Type:	Brushless, self-exciting
Insulation Class, Temperature Rise:	H/H
Telephone Interference Factor (TIF):	< 50
THF:	< 2%
Voltage Regulation, Steady State:	≤ ± 1%
Alternator Capacity:	1650KVA
Alternator Efficiencies:	95.5%
Air Cooling Flow:	2.63m <sup>3</sup> /s

# MP-1800M

## Control System

### Standard Deepsea DSE7320 Auto Mains Failure Control Panel

- Auto Mains (Utility) Failure Control Module suitable for a wide variety of single genset applications.
- Displays warnings, shutdown and engine status info on the back-lit LCD screen, illuminated LEDs, remote PC. Monitors the mains (utility) supply. Includes USB, RS232 and RS485 ports for system expansion.
- Compatible with electronic and non-electronic engines and offer flexible inputs, outputs and engine protections to meet extensive industry requirements.
- Includes enhanced event and performance monitoring, remote communications to reduce engine wear. It can either be programmed using the front panel or by using DSE PC software.



### Optional Deepsea DSE8610 Auto Paralleling Control Panel

- Synchronizing Auto Start Control Module for multi-genset load share system, designed to synchronize up to 32 gensets including electronic and non-electronic engines.
- Monitors the genset and indicates operational status and fault conditions, automatically starting or stopping the engine on load demand or fault condition.
- System alarms are annunciated on the LCD screen, illuminated LED and audible sounder.
- Records 250 events log for maintenance. Extensive monitoring, metering and protection features are included as well as comprehensive communication and system expansion options.
- Using DSE PC Software allows alteration of the operational sequences, timers, alarms with all communication ports active.



**MP-1800M****Options****Engine**

- Water Jacket Preheater
- Water Separator
- Oil Pump
- Oil Preheater
- Battery Charger

**Fuel System**

- Daily Fuel Tank
- External Fuel Tank
- Auto Fuel Filling System
- Fuel Level Sensor

**Control System**

- Auto Remote Control Panel
- AMF Function Control Panel
- Auto Paralleling Control Panel
- Auto Transfer Switch (ATS)
- ABB breaker

**Alternator**

- Anti Condensation Heater
- Permanent Magnet Generator
- Winding Temp Sensor

**Enclosure**

- Rainproof Type
- Soundproof Rental Type
- Mobile Type

**Available Voltages**

- 440/254V
- 415/240V
- 380/220V

**Reference Standards**

**Generator Set:** ISO 8528, CE

**Engine:** ISO 3046, BS 5514, DIN 6271

**Alternator:** BS EN 60034, IEC34, BS5000, NEMA MG1-32, VDE 0530, CSA C22.2-100, AS1359

**Warranty**

Mega Power provides a full line of brand new and high quality products. Each and every unit is strictly factory tested.

Warranty is according to our standard conditions: A. 15 months, counted on the day Mega sold to the first buyer; B. One year after installation; C. 1000 running hours (accumulated); subject to the earlier one.

Service and spare parts are available from Mega Power or distributors in your location.